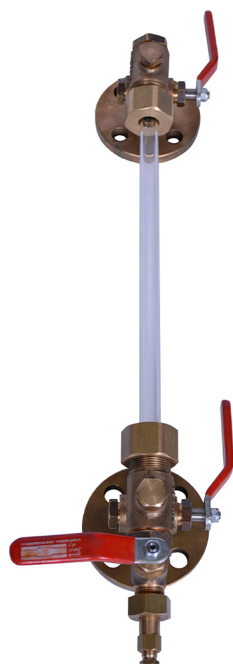


Eshteal Arak Industrial Engineering Company is the only manufacturer of high-capacity rotary cup burners in the country, and these burners are used by all boiler companies in the country. Among the unique products produced by this company are power valves that are designed for saturated and superheated steam lines. This product was produced for the first time in the country in 2014 in the Mobarake steel complex and at a pressure of 70 bar It has been used successfully Eshteal Arak Industrial Engineering Company has been modernizing its production lines since 2003 and is currently equipped with more than 98 machines, 61 of which are CNC lathes and milling centers (referred to at the end), stepped into the field of producing products with modern sophisticated technology It should be mentioned that this company has succeeded in obtaining the knowledge-based badge on burners and valves during two consecutive periods, and in order to enhance the brand and satisfy customers, the necessary standards such as ISIRI 7595, ISIRI 7594, ISO 3834, ISO 9001:2015 and implemented 5S



The 'Absolute' liquid level gauge is suitable for use with a variety of liquids on pressure vessels, tanks etc., in many industries. The gauge is automatic in top and bottom arms. In the event of the gauge glass breaking both the vapour and the liquid are automatically shut of by means of a ball in each arm.

Absolute Liquid Level Gauge



ESHTEAL ARAK

INDUSTRIAL ENGINEERING CO.
Manufacturer of burners, valves
and precision tools for steam boilers

☎ 086-34121313-5

☎ 09908136277 (sales)
☎ 09912709038 (after sales)

☎ 086-34131217

✉ eshteal.arak@gmail.com
✉ eshteal.commerce@gmail.com

📷 eshtearak

📍 Factory: Hadid St-Haji Abad Industrial Zone 7th km
of Qom Road-Arak-Iran

📍 Head office: 4th floor-No.3 Apartment Asef Vaziri
alley southern Bahar St Taleghani St-Tehran-Iran

Absolute Liquid Level Gauge

Type LGV

Description

Absolute Liquid Level Gauge offer an easy and cost-effective Way to indicate liquid levels. They are perfect for low pressure, non-hazardous applications.

The gauge is automatic in top and bottom arms. In the event Of the gauge glass breaking both the vapour and the liquid are automatically shut of by means of a ball in each arm. There is no possibility of trapping false liquid levels, as the use of a large ball valve in the water arm ensures its opening against the head of liquid in the vessel.



Applications

The Absolute liquid level gauge is suitable for use with a variety of liquids on pressure vessels, tanks etc., in many industries.

Limiting conditions

Maximum working pressure for the Bronze material is 12 bar and for the Gunmetal material is 20 bar.

Dimensions and pipe connections

Dimensions (approx.) in mm

Size	Material (Bottom arm body)	Flanged connections							A	B	E	L
		D	R	S	T	N	O	P				
1/2"	Bronze	95	28	3	12	4	14	66.5	83	135	82.5	110
	Bronze	115	28	3	12	4	14	82.5	83	135	82.5	110
3/4"	Bronze	115	28	3	12	4	18	82.5	83	135	82.5	110
	Gunmetal	115	28	3	14	4	18	82.5	83	135	82.5	110

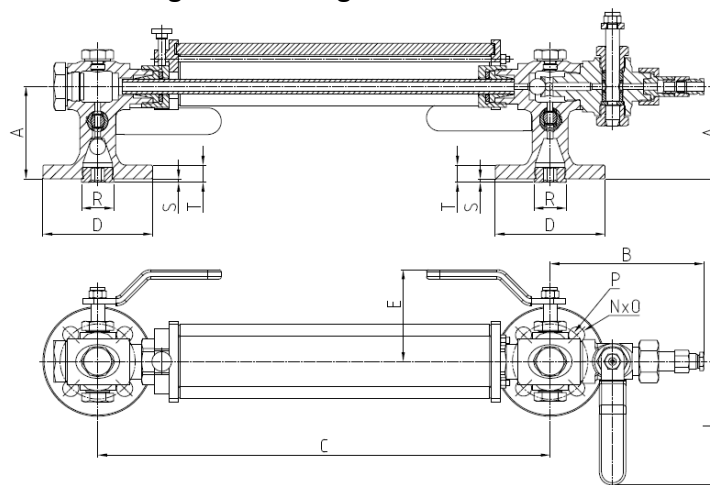
- The Dimension 'C' Can Be Changed According to The Installation Conditions.

Connection

N = No. of holes

O = Dia. of holes

P = Pitch circle dia.



Material

Item	Part name	Material
1	Stem positioner nut	Brass
2	Stem	Stainless steel
3	Drain pipe fitting nut	Brass
4	Packing	PTFE
5	Olvis	Stainless steel
6	Packing nut	Brass
7	Handle	Steel
8	Bottom plug	Brass
9	Ball	Steel
10	Top plug	Brass
11	Gage glass packing nut	Brass
12	Pin	Stainless steel
13	End plug	Brass
14	Bottom arm body	Bronze
		Gunmetal
15	Try valve body	Bronze
16	Try valve fitting	Brass
17	Try valve fitting nut	Brass
18	Drain pipe nut	Brass

